

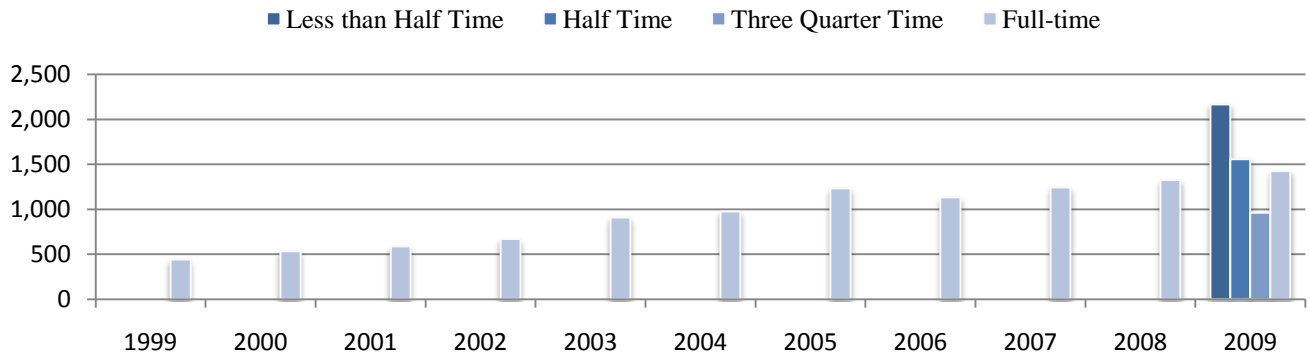
# EMCC Enrollment Status

## Spring Semesters - 45th Day

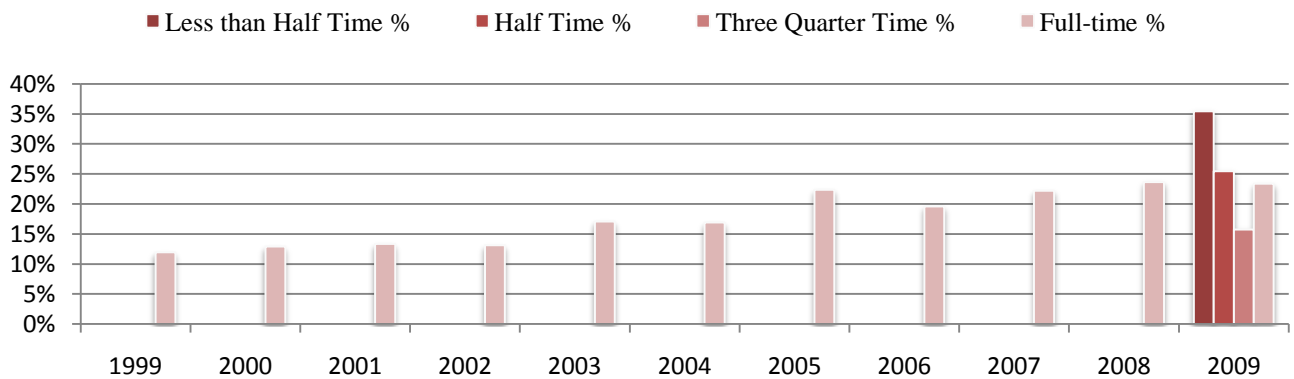
Source: EMCC Office of Planning and Institutional Effectiveness. Data accessed from the Maricopa Institutional Research Data Warehouse using Students table on 03/23/09.

Spring Semesters - 45th Day											
	1999	2000	2001	2002	2003	2004	2005	2006	2007	2008	2009
Less than Half Time	*	*	*	*	*	*	*	*	*	*	2,165
Half Time	*	*	*	*	*	*	*	*	*	*	1,555
Three Quarter Time	*	*	*	*	*	*	*	*	*	*	960
Full-time	442	535	587	669	909	976	1,231	1,132	1,243	1,324	1,426
<b>TOTAL</b>	<b>3,694</b>	<b>4,144</b>	<b>4,406</b>	<b>4,678</b>	<b>5,089</b>	<b>5,319</b>	<b>5,773</b>	<b>5,512</b>	<b>5,785</b>	<b>5,597</b>	<b>6,106</b>
	1999	2000	2001	2002	2003	2004	2005	2006	2007	2008	2009
Less than Half Time %	*	*	*	*	*	*	*	*	*	*	35%
Half Time %	*	*	*	*	*	*	*	*	*	*	25%
Three Quarter Time %	*	*	*	*	*	*	*	*	*	*	16%
Full-time %	12%	13%	13%	13%	17%	17%	22%	20%	22%	24%	23%

**Part-time vs. Full-time #  
Spring 45th Day Enrollment**



**Part-time vs. Full-time %  
Spring 45th Day Enrollment**



\* Data unavailable due to new format implemented in Spring 2008

	1999	2000	2001	2002	2003	2004	2005	2006	2007	2008	2009
<b>Less than</b>	*	*	*	*	*	*	*	*	*	*	2,165
<b>Half Time</b>	*	*	*	*	*	*	*	*	*	*	1,555
<b>Three Q</b>	*	*	*	*	*	*	*	*	*	*	960
<b>Full-time</b>	442	535	587	669	909	976	1,231	1,132	1,243	1,324	1,426

	1999	2000	2001	2002	2003	2004	2005	2006	2007	2008	2009
<b>Less than</b>	*	*	*	*	*	*	*	*	*	*	35%
<b>Half Time</b>	*	*	*	*	*	*	*	*	*	*	25%
<b>Three Q</b>	*	*	*	*	*	*	*	*	*	*	16%
<b>Full-time</b>	12%	13%	13%	13%	17%	17%	22%	20%	22%	24%	23%